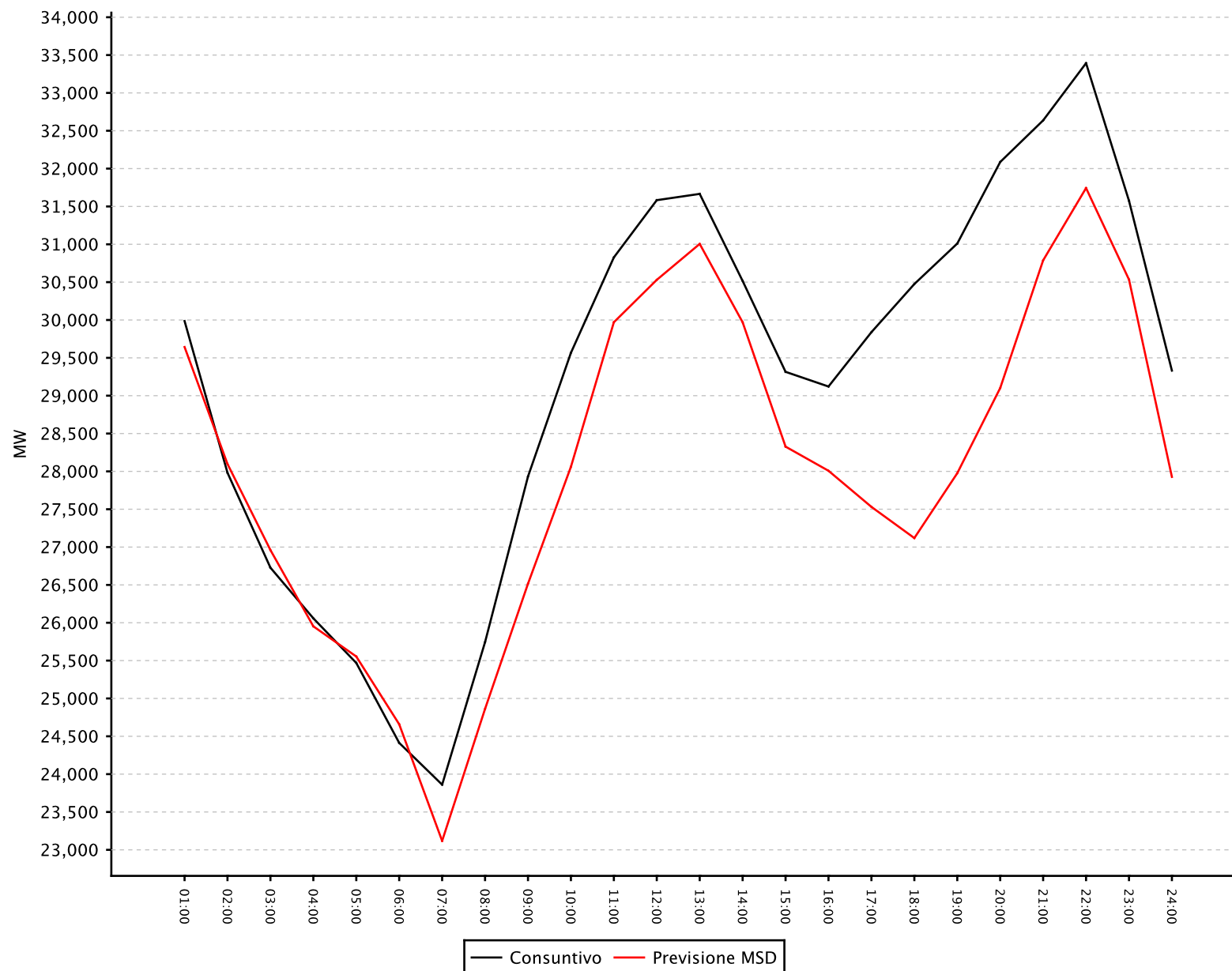


ORA	CONSUNTIVO	PREVISIONE
01:00	29,986	29,643
02:00	27,982	28,098
03:00	26,728	26,961
04:00	26,059	25,953
05:00	25,469	25,554
06:00	24,413	24,659
07:00	23,861	23,118
08:00	25,744	24,862
09:00	27,932	26,516
10:00	29,566	28,060
11:00	30,827	29,970
12:00	31,583	30,530
13:00	31,666	31,005
14:00	30,516	29,970
15:00	29,315	28,327
16:00	29,121	28,008
17:00	29,839	27,531
18:00	30,475	27,119
19:00	31,010	27,976
20:00	32,087	29,101
21:00	32,637	30,788
22:00	33,393	31,743
23:00	31,575	30,534
24:00	29,331	27,927
Totale:	701,115	673,953



Elaborazione effettuata sulla base di dati di previsione di esercizio

Scostamento alla Potenza Massima :	4.94%
Scostamento alla Potenza Minima :	3.11%
Scostamento Assoluto Medio Potenza :	3.74%
Scostamento Energia :	3.87%